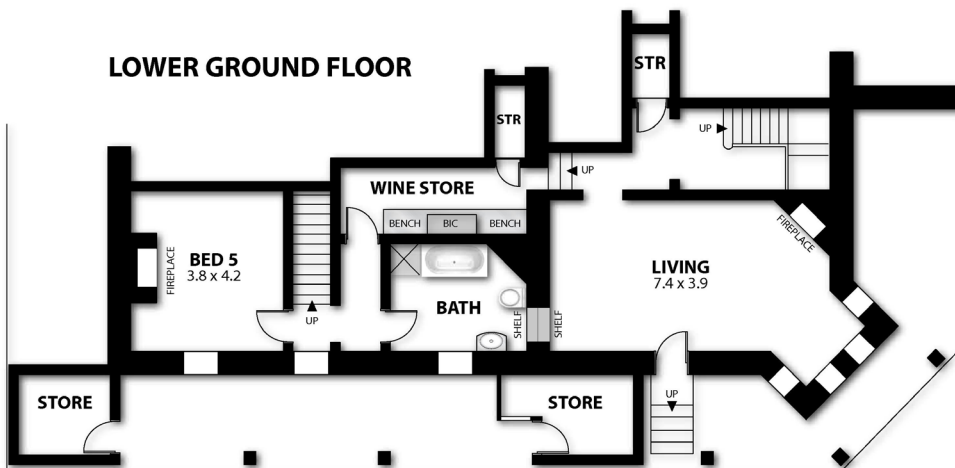
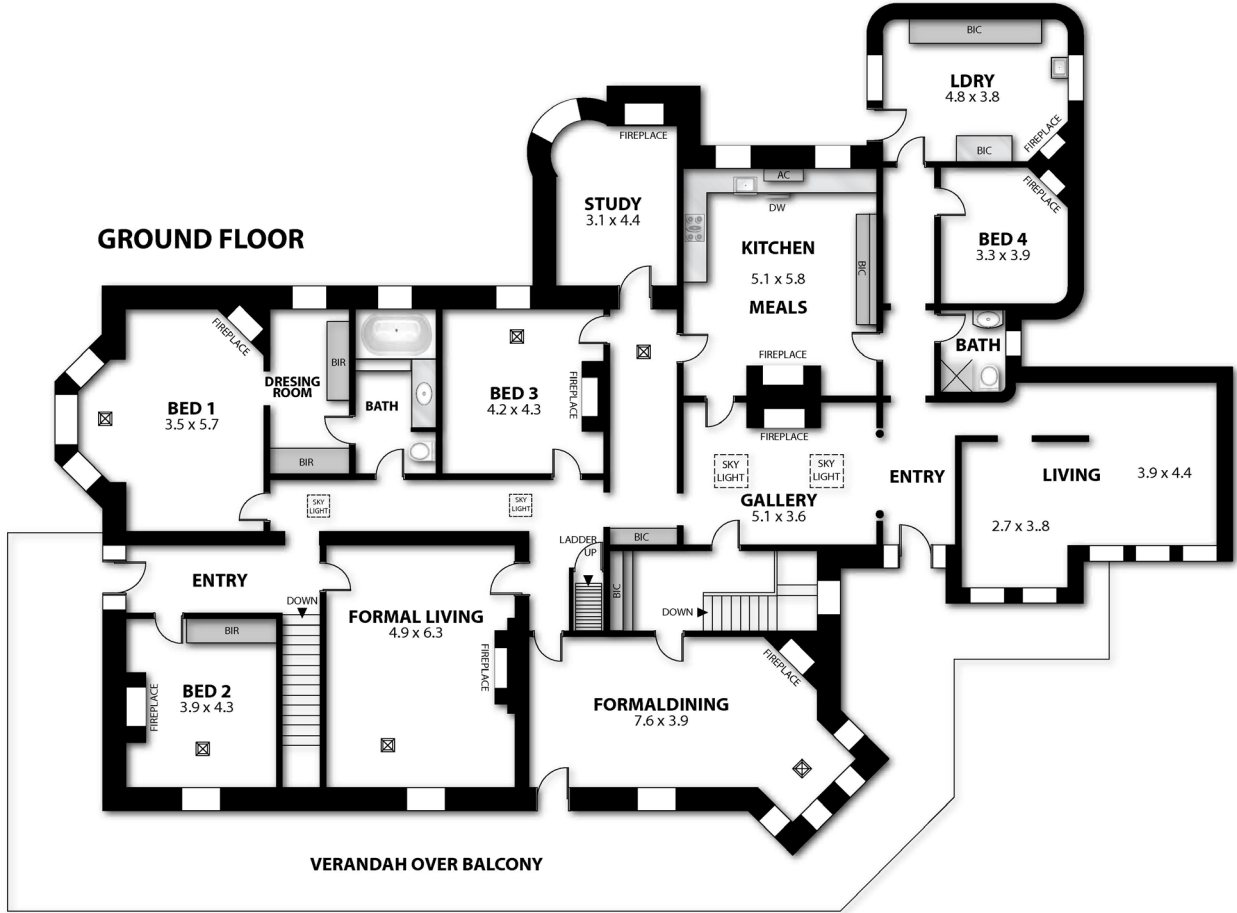
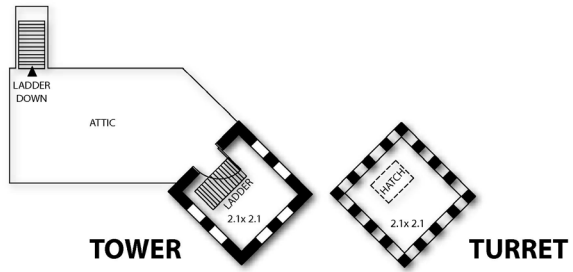


GROUND FLOOR: 416m<sup>2</sup> (approx)  
 LOWER GROUND FL: 120m<sup>2</sup> (approx)  
 TOWER & TURRET: 4m<sup>2</sup> (approx)  
 VER. OVER BALCONY : 96m<sup>2</sup> (approx)  
 LOWER GRND STORE: 19m<sup>2</sup> (approx)  
 TOTAL: 551m<sup>2</sup> (approx)



*Dee-Anne Hunt*  
 Lifestyle Property Specialist

26 STURT VALLEY ROAD STIRLING